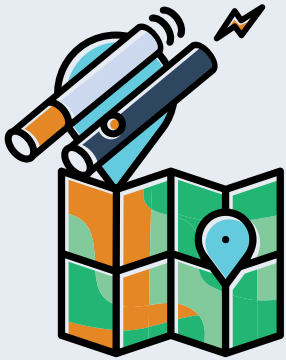


# TOBACCO RETAILER DENSITY

Greater tobacco retailer density has been linked with **lower life expectancies and higher age-adjusted mortality rates.**



The number of tobacco retailers per square mile is nearly **5x more in the lowest-income neighborhoods** than in the highest-income neighborhoods.

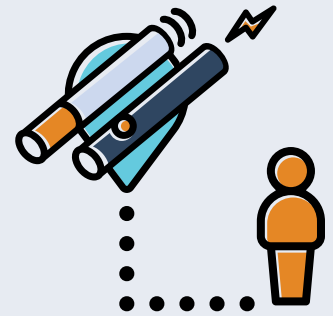
**In lower-income neighborhoods,** more tobacco retailers had advertisements for tobacco products, sold flavored cigars and cigarillos, and featured **tobacco advertisements targeting youth.**

Research has found **higher tobacco retailer density** in neighborhoods with a higher percentage of **African Americans**, as well as **individuals living below the poverty line.**

**Low-income African American communities** are more likely to have **high tobacco retailer density** than any other community.

**LGBTQ+ neighborhoods** have also been found to have a higher density of tobacco retailer outlets.

**50%** of Las Vegas residents live within a **half mile of a tobacco retailer.**



Southern Nevada has 1858 tobacco retailers. That's **54 times the number of McDonald's stores** and **36 times the number of Starbucks stores** located in Las Vegas.

Nationally, **63% of public schools are within 1,000 feet** of a tobacco retailer.

In Las Vegas, **35% of public schools are within 1,000 feet** of a tobacco retailer.

Nationally, **54% of tobacco retailers** are within 500 feet—about a 2-minute walk—of another tobacco retailer.

In Las Vegas, **58% of tobacco retailers** are within 500 feet of another retailer.